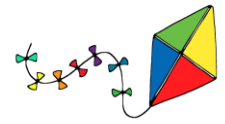
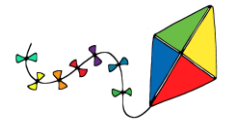


Rhydypenau Primary School
What will my child learn at school this term?



| YEAR 2 - Spring Term 2026 | | CONTEXT: Just Imagine | |
|---|--|--|--------------|
| <p>Pupil voice plays an important role when planning the activities for our contexts here at Rhydypenau and we actively follow the many creative and imaginative ideas generated by our pupils. As part of our work as a Welsh Government Pioneer School we ensure that all learning experiences aim to support our children in becoming;</p> <ol style="list-style-type: none"> 1. Ambitious, Capable Learners - ready to learn throughout their lives. 2. Enterprising, Creative Contributors - ready to play a full part in life and work. 3. Ethical and Informed Citizens of Wales and the World. 4. Healthy, Confident Individuals - ready to lead fulfilling lives as valued members of society. | | | |
| Class Teachers: Mrs Davies and Mrs Williams | | Teaching Assistants: Miss Jones and Mr Hammond | Class: 2D/2W |
| Area of Learning and Experience (AOLE) | Proposed Overview - May evolve as a result of pupil voice. | | |
| LANGUAGE, LITERACY AND COMMUNICATION | <p>Genre</p> <ul style="list-style-type: none"> ● Narrative - retelling Jack and the Beanstalk, Fairy tales, innovating stories, adventure story <p>Oracy</p> <ul style="list-style-type: none"> ● Drama, storytelling and hot seating <p>Welsh</p> <ul style="list-style-type: none"> ● Y Tywydd (The weather), Dillad (Clothes), Eisteddfod, Bwyd (Food) <p>Daily reading Phonics Letter joins</p> | | |
| MATHEMATICS AND NUMERACY | Place value, read write and order numbers to 100, multiplying and dividing by 2, 5 and 10, double and halve numbers to 20, adding and subtracting 10 or 20 to/from a 2 digit number, telling the time to | | |

Rhydypenau Primary School



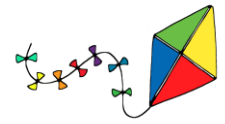
What will my child learn at school this term?

| | |
|---------------------------------|--|
| | <p>quarter of an hour, recognise and count coins, recognise and count notes, measuring in metres and centimetres.</p> <p>Place value, read, write and order numbers to 1000, multiplying and dividing by 3 and 4, double and halve numbers to 2 digit numbers,, adding and subtracting 2 digit numbers, telling the time to 5 minutes, recognise and count coins and notes..</p> <p>Length - metres and centimetres Weight - grams</p> <p>3D shape</p> |
| HUMANITIES | <p>Santes Dwynwen Religion and food UN Rights of the Child</p> |
| SCIENCE & TECHNOLOGY | <p>Planting, observing and measuring seeds and plants. Identifying plants and parts of a plant. Animation Investigation - Forces Design and make</p> |
| HEALTH & WELLBEING | <p>Design and create an obstacle course. Healthy eating P.E./Games Values - Love and Equality No Outsiders</p> |
| EXPRESSIVE ARTS | <p>Music inspired 'Jack and the Beanstalk'. Dance Large scale outdoor art Eisteddfod</p> |

Homework

Rhydypenau Primary School

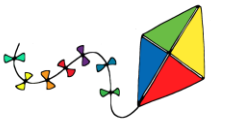
What will my child learn at school this term?



| | |
|--|---|
| <p>Reading - Reading book, Reading Eggs Spelling - Weekly - Google classroom Maths - Mental Maths - Weekly - Google classroom</p> | <p>Context: Children may be given appropriate context based homework to support/reinforce their learning. This can be in the form of research, note taking, planning and presenting information.</p> |
|--|---|

| Additional Information | |
|-------------------------------|---|
| Monday | P.E./Games - alternative weeks |
| Tuesday | P.E./Games - alternative weeks |
| Wednesday | Wednesday Wallets - a free choice book for you to share with your child. Please bring the wallet back the following Wednesday . |
| Thursday | Mental Maths -Assessment (number bonds and time tables) Mental Maths will be uploaded to Google Classroom on a Friday. Please help your child learn their number bonds. They will be assessed every Thursday (20 questions in 90 seconds). |
| Friday | <p>Spelling - Assessment on a Friday.</p> <p>Friday Wallets - a book from the reading scheme that is just below or the level at which they are being taught, to help develop their fluency and expression and for enjoyment. Please return this wallet the following Thursday.</p> <p>Mental Maths - Uploaded to Google Classroom.</p> <p>Spelling - A list or letter blend (e.g. ee, oo, ai, ay) will be uploaded to Google Classroom on a Friday. Please help your child by practising their words, they will be tested on the following Friday.</p> |

Rhydypenau Primary School
What will my child learn at school this term?



All class communications will be shared through Seesaw, if you need any support then please speak to the class teacher.