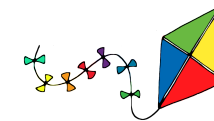


# Rhydypenau Primary School

## What will my child learn at school this term?



**YEAR 5: Autumn**

**CONTEXT: Dr Who and the Timeline of Disaster**

Pupil voice plays an important role when planning the activities for our contexts here at Rhydypenau and we actively follow the many creative and imaginative ideas generated by our pupils. As part of our work as a Welsh Government Pioneer School we ensure that all learning experiences aim to support our children in becoming;

1. Ambitious, Capable Learners - ready to learn throughout their lives.
2. Enterprising, Creative Contributors - ready to play a full part in life and work.
3. Ethical and Informed Citizens of Wales and the World.
4. Healthy, Confident Individuals - ready to lead fulfilling lives as valued members of society.

**Class Teachers:** Mrs E Dennis (5D) and Mr Fryer (maternity cover until half term),  
Miss Draper & Miss Foreman (5DF)

**Teaching Assistant:** Mrs L Powell

**Area of Learning and Experience (AOLE)** \*\*Proposed overview - may evolve as a result of Pupil Voice\*\*

**LANGUAGE, LITERACY AND COMMUNICATION**

Instructions  
Narrative  
Report Writing (applied)  
Explanation (applied)  
Recount (applied)  
Welsh  
French (PPA)

**MATHEMATICS AND NUMERACY**

Place Value  
Addition and Subtraction  
Multiplication and Division  
Fractions

**HUMANITIES**

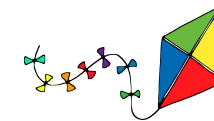
Influential Figures throughout History  
The life and impact of Betty Campbell  
Welsh coal mining and the NHS

**SCIENCE & TECHNOLOGY**

Online/Internet Safety  
Food Technology  
Making a Tardis (Design and Technology)  
Circuits and electricity  
Coding

# Rhydypenau Primary School

## What will my child learn at school this term?



|                               |                                                                                                                              |
|-------------------------------|------------------------------------------------------------------------------------------------------------------------------|
| <b>HEALTH &amp; WELLBEING</b> | Physical Education - Gymnastics, Team Building, Cross Country, Netball, Rugby<br>Values - Friendship, Kindness<br>Daily Mile |
| <b>EXPRESSIVE ARTS</b>        | Art - Kandinsky<br>Drama, Music and Dance - Year 5 Performance<br>Music - Delia Derbyshire, percussion, boomwhackers         |

### Homework



Reading and Spelling activities are available to pupils on Reading Eggs for practice at home.



Times Tables Rockstars is also accessible at home and is a great way for pupils to practise their times tables.

- Focused spelling lists will be posted on Google Classroom weekly, pupils will be quizzed on these words on Fridays.
  - Numeracy worksheets will be set to support in class learning when required. All class-based tasks can also be accessed at home for revision purposes, if required.
  - Project/context work - this will be set throughout the year for pupils to complete at home.
- Although this seems like a lot, please work through these tasks at your own pace whilst prioritising time to relax and participate in extracurricular interests.

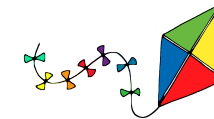
#### Additional Information

Homework will be set through Google Classroom. Sometimes we will ask that photographs/videos are also shared on SeeSaw in the appropriate learning folders.



# Rhydypenau Primary School

## What will my child learn at school this term?



| Additional Information |                                                                                                                                                                                                                                                                                                            |
|------------------------|------------------------------------------------------------------------------------------------------------------------------------------------------------------------------------------------------------------------------------------------------------------------------------------------------------|
| Monday                 |                                                                                                                                                                                                                                                                                                            |
| Tuesday                |                                                                                                                                                                                                                                                                                                            |
| Wednesday              |                                                                                                                                                                                                                                                                                                            |
| Thursday               | <p><b>Fortnightly PPA with Mr Axon (Superstars - PE) and Mrs Powell (RVE &amp; French)</b><br/>                     PE Kits - white T-Shirt, dark shorts/joggers and trainers should be worn to school. <b><u>Please refrain from wearing football kits.</u></b></p>                                       |
| Friday                 | <p>Fortnightly Games/PE (with class teachers)<br/>                     PE Kits - white T-Shirt, dark shorts/joggers and trainers should be worn to school<br/>                     Weekly spelling test<br/>                     New homework assigned on Google Classroom due in the following Friday</p> |

### Year 5 PE/Games Timetable - Autumn 2025

| W/C                   | 08/09  | 15/09          | 22/09  | 19/09          | 06/10  | 13/10          | 20/10  | 27/10     | 03/11          | 10/11  | 17/11          | 24/11  | 01/12          | 08/12  | 15/12          |
|-----------------------|--------|----------------|--------|----------------|--------|----------------|--------|-----------|----------------|--------|----------------|--------|----------------|--------|----------------|
| PE Day(s) of the Week | Friday | Thursday (PPA) | Friday | Thursday (PPA) | Friday | Thursday (PPA) | Friday | Half Term | Thursday (PPA) | Friday | Thursday (PPA) | Friday | Thursday (PPA) | Friday | Thursday (PPA) |



All class communications will be shared through Seesaw, if you need any support then please speak to the class teacher.



Rewards are given to the children based on their values and daily routines.