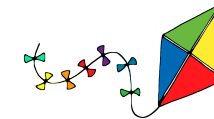


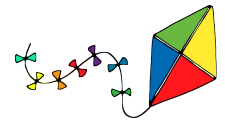
Rhydypenau Primary School

What will my child learn at school this term?



Year 2 - Autumn Term 2025		CONTEXT: Changes
<p>Pupil voice plays an important role when planning the activities for our contexts here at Rhydypenau and we actively follow the many creative and imaginative ideas generated by our pupils. As part of our work as a Welsh Government Pioneer School we ensure that all learning experiences aim to support our children in becoming;</p> <ol style="list-style-type: none"> 1. Ambitious, Capable Learners - ready to learn throughout their lives. 2. Enterprising, Creative Contributors - ready to play a full part in life and work. 3. Ethical and Informed Citizens of Wales and the World. 4. Healthy, Confident Individuals - ready to lead fulfilling lives as valued members of society. 		
Class Teacher: Mrs C Williams and Mrs C Davies		Teaching Assistant: Miss Jones, Mrs Page and Mrs Nash
Class: 2W and 2D		
Area of Learning and Experience (AOLE)	Proposed Overview - May evolve as a result of pupil voice.	
LANGUAGE, LITERACY AND COMMUNICATION	<p>Genre</p> <ul style="list-style-type: none"> ● Recount writing ● Instructional writing <p>Welsh</p> <ul style="list-style-type: none"> ● Beth sy'n bod?, Y Meddyg, Teganau 	
MATHEMATICS AND NUMERACY	<ul style="list-style-type: none"> ● Place value - tens and ones, ordering, counting, reading and writing numbers to 100 ● Addition and subtraction - fact families (4+5=9, 5+4=9, 9-4=5, 9-5=4), adding multiples of 10 to a number, +/- a 1 digit number to a 2 digit number, adding three 1 digit numbers, more and less, difference between ● Measure - length, cm and m 	
HUMANITIES	<p>Explore the local area; past, present and future.</p> <ul style="list-style-type: none"> ● Use and draw maps with a key ● Features of familiar and less familiar places ● Directions 	

Rhydypenau Primary School



What will my child learn at school this term?

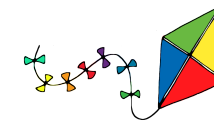
	<ul style="list-style-type: none"> • Compare areas; similarities and differences • Communities • Human impact on the local area <p>Religious building and artefacts - similarities and differences UN Rights of the Child</p>
SCIENCE & TECHNOLOGY	<p>Properties of materials. Develop investigational skills to investigate properties of materials, make predictions, collect and interpret data.</p> <p>Use a digital device to make something happen.</p> <p>Coding.</p>
HEALTH & WELLBEING	<p>Physical activity within the local environment</p> <p>Values</p> <p>Self awareness and emotions</p> <p>Team activities, cooperating and collaborating</p> <p>PE/Games/How to be healthy</p>
EXPRESSIVE ARTS	<p>Van Gogh - landscapes</p> <p>Mixing greens and blues. Using pastels to add detail to landscapes</p> <p>Collage and sketching</p> <p>Music</p>

Homework

Reading - Reading book, Reading Eggs
Spelling - Weekly - Google classroom
Maths - Further information to follow

Context: Children may be given appropriate context based homework to support/reinforce their learning. This can be in the form of research, note taking, planning and presenting information.

Rhydypenau Primary School
What will my child learn at school this term?



Additional Information	
Monday	P.E./Games - Alternate Monday (a timetable has been sent out via Seesaw)
Tuesday	P.E./Games - Alternate Tuesday (a timetable has been sent out via Seesaw)
Wednesday	Wednesday Wallets - a free choice book for you to share with your child. Please bring the wallet back the following Wednesday.
Thursday	Mental Maths - Further information to follow
Friday	Friday Wallets - a book from the reading scheme that is just below or the level at which they are being taught, to help develop their fluency and expression and for enjoyment. Please return this wallet the following Thursday . Mental Maths - Further information to follow Spelling - A list or letter blend (e.g. ee, oo, ai, ay) will be uploaded to Google Classroom on a Friday (starting on 19th September). Please help your child by practising their words.



All class communications will be shared through Seesaw, if you need any support then please speak to the class teacher.